



WEST MAIN STREET CORRIDOR IMPROVEMENT PROJECT

Public Meeting for Phase 1 Improvements

February 20, 2020

6:00 PM to 8:00 PM

Hobart Arena – Bravo Room



Meeting Overview

- West Main Street Corridor Improvements
- Purpose of this Project
- Project Description
- Proposed Improvements
 - Ridge Avenue to Elm Street
 - Elm Street to Adams Street
 - Adams Street to Cherry Street
- Schedule

West Main Street Corridor Improvements



Purpose of the Project

- Address conditions contributing to high crash rate (Improve Safety?)
- Improve pedestrian facilities
- Upgrade existing infrastructure

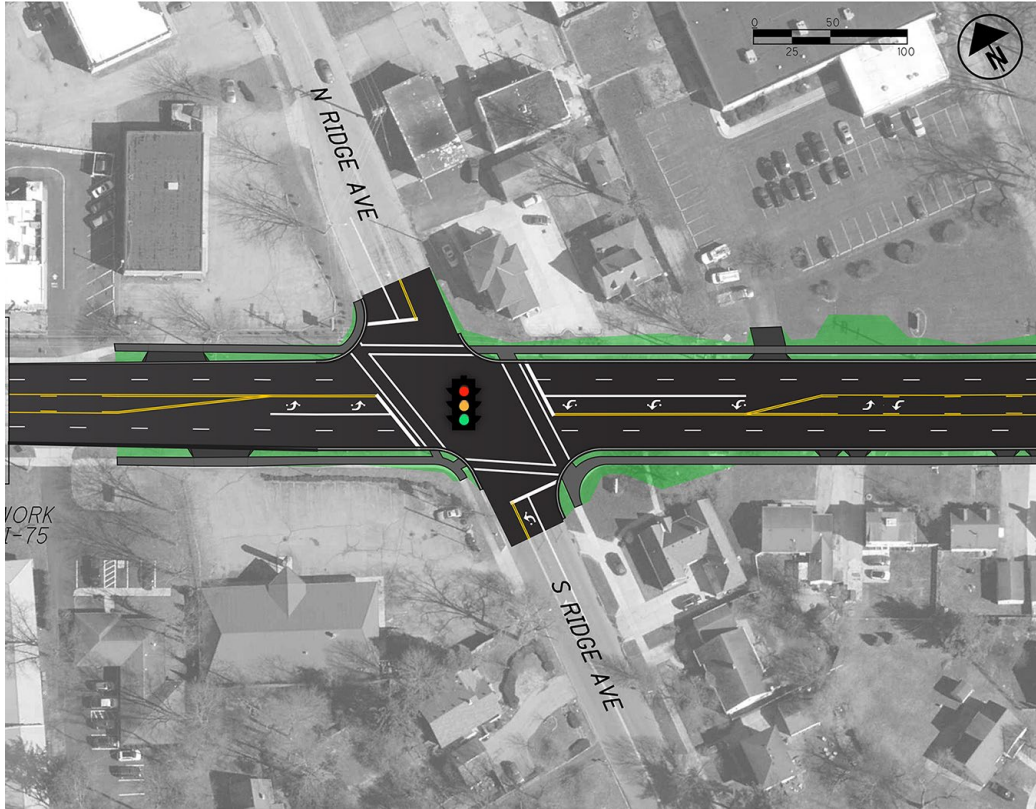


- Phase 1 – 220 crashes from 2013-2015
- Over 20% injury crashes

Project Description

- Widen roadway to increase lane widths
- Provide consistent 4-foot grass strip between roadway and sidewalk
- Modify roadway cross section between Adams St and Cherry St to provide three lanes and deeper angled parking stalls
- Install a raised median between Elm Street and Adams Street
- Upgrade existing traffic signals at Plum Street, Adams Street, Elm Street, and Ridge Avenue
- Remove existing traffic signals Cherry Street, Monroe Street, and Cedar Street
- Install a new traffic signal at Oxford Street
- Upgrade existing storm sewer and sanitary sewer

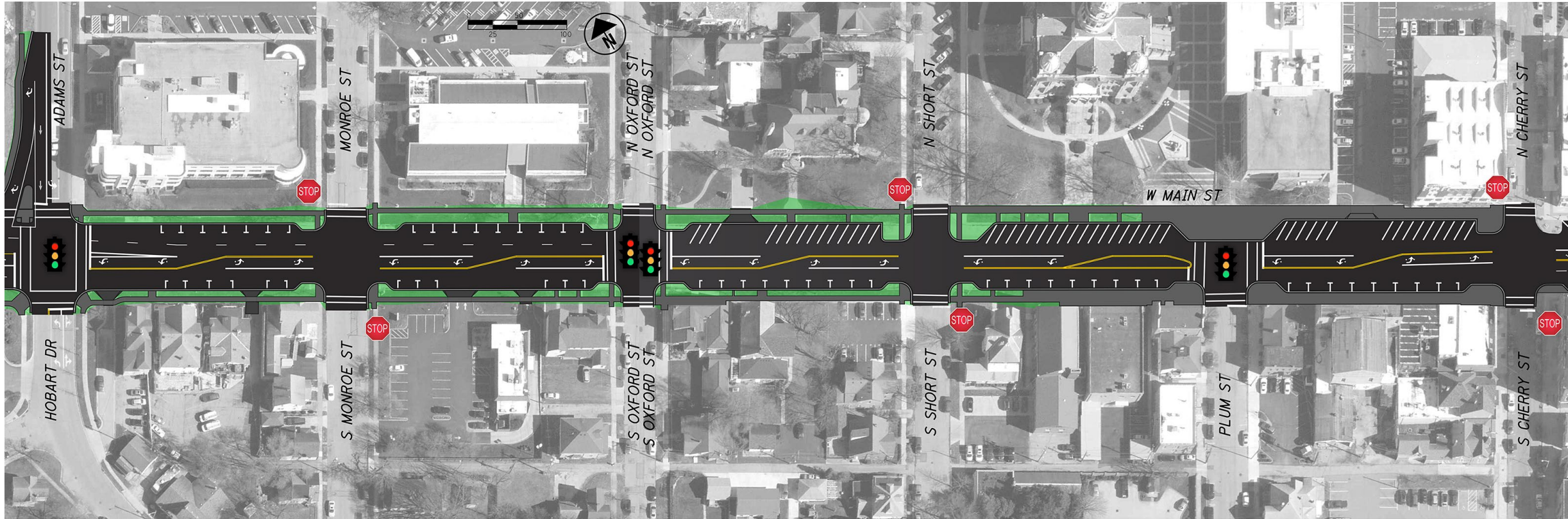
Proposed Improvements – Ridge Ave to Elm St



Proposed Improvements – Elm St to Adams St

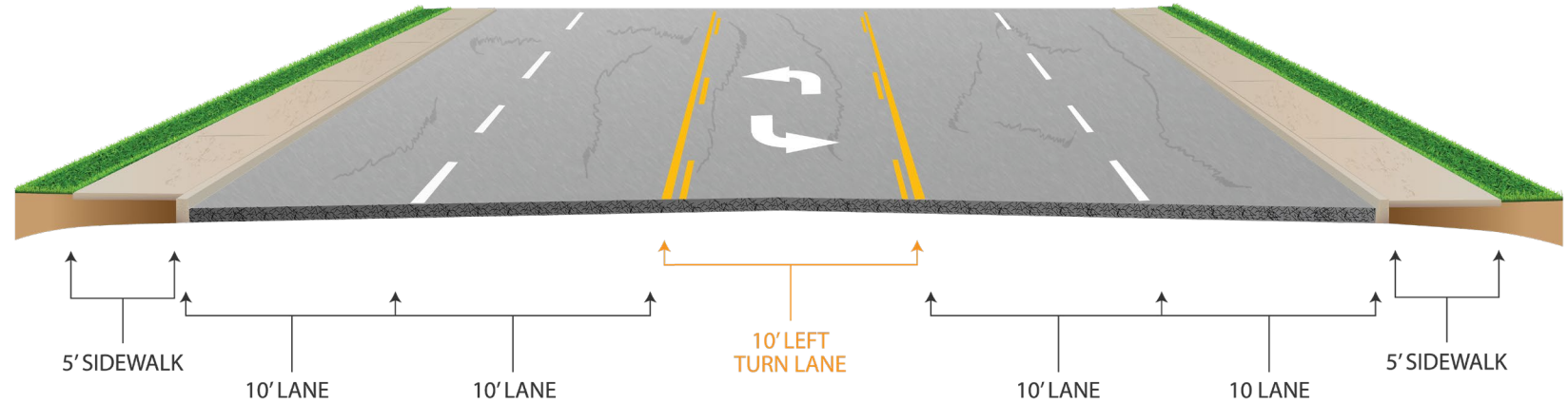


Proposed Improvements – Adams St to Cherry St

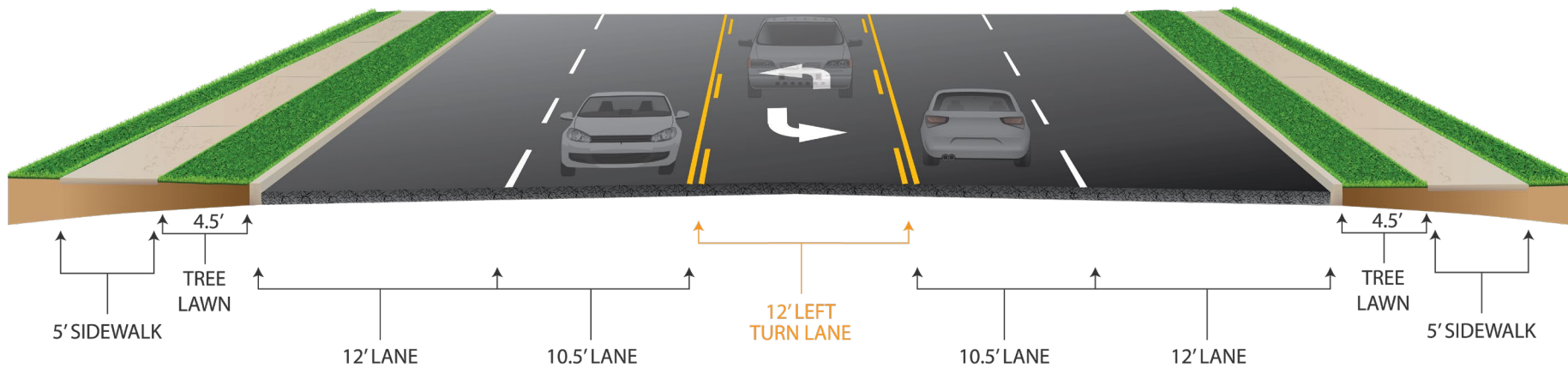


Roadway Cross Section

Existing



Proposed



Traffic Operations

Level of Service and Average Delay for Signalized Intersections
Pre-Construction and Post-Construction Conditions

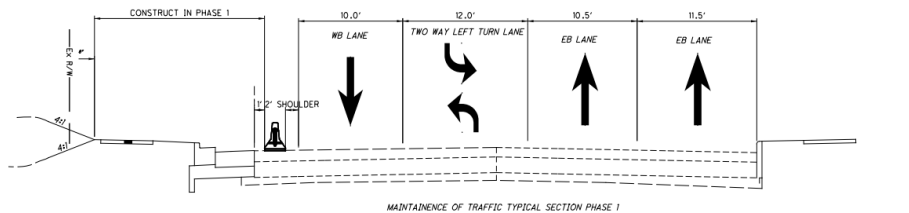
	2019 AM	2019 PM	2043 AM		2043 PM	
			<i>No Build</i>	<i>Build</i>	<i>No Build</i>	<i>Build</i>
Ridge Avenue	B / 14.5 s	B / 16.6 s	B / 15.1 s	B / 18.3 s	B / 18.1 s	C / 24.2 s
Elm Street	B / 16.2 s	B / 18.0 s	B / 16.9 s	B / 16.3 s	B / 19.7 s	B / 19.1 s
Adams Street	C / 21.0 s	C / 21.7 s	C / 22.2 s	B / 19.8 s	C / 24.3 s	C / 25.1 s
Plum Street	B / 11.4 s	B / 12.4 s	B / 11.7 s	B / 11.9 s	B / 12.9 s	B / 16.3 s

Safety Performance

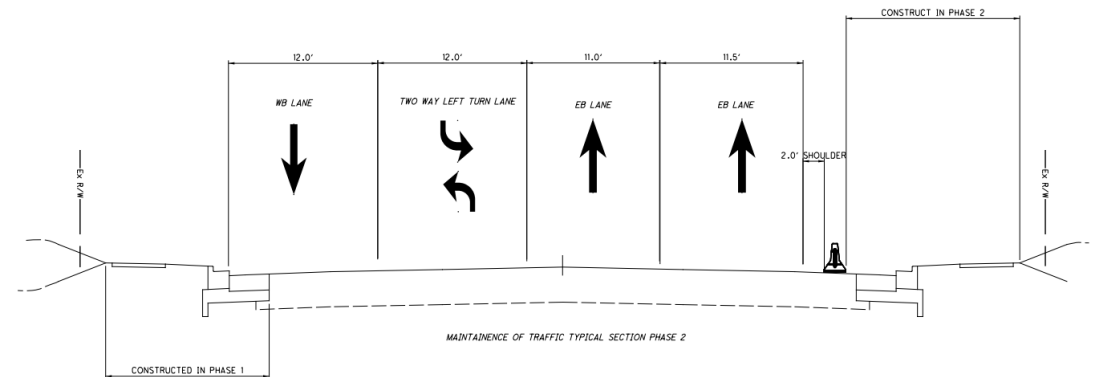
- Anticipate 30% reduction in crashes along West Main Street Corridor
- Reduced potential for:
 - Sideswipe crashes due to narrow lane widths
 - Parking maneuver crashes due to shallow, front-in angled parking spaces
 - Angle crashes in access management locations
 - Rear end crashes at locations where unwarranted signals will be removed

Maintenance of Traffic

- Construction to occur in two phases
- Two-way traffic to be maintained
- Access to driveways and properties to be maintained
- Temporary sidewalk closures will be necessary



Phase 1 – construct improvements on north side of West Main St



Phase 2 – construct improvements on south side of West Main St

Schedule

