

Troy Parks and Recreation Master Plan

Advisory Committee Meeting #1
June 5, 2025



AMERICAN
STRUCTUREPOINT
INC.

TROY

Agenda

Welcome and Introduction

What is a Parks and Recreation Master Plan?

Project Overview

Advisory Committee Roles

Existing Conditions / Park Analysis (Participation Exercise)

Next Steps

Introduction



Matthew O'Rourke
Group Leader / Project Manager



Disa Dunaway
Urban Design



Ashley Newnam
Senior Planner



Evan Stowell
Intern

Introductions/Ice Breaker

If you had a personal ‘park passport,’ what would be the first stamp in it — your favorite outdoor place and why?



What is a Parks and Recreation Master Plan?

Prioritizes investments in a community's parks system

- Physical facilities (playgrounds, sports fields, pickleball courts, etc.)
- Programs (fitness classes, events for kids, festivals, etc.)
- We base this on a full inventory of all existing park items

Ohio Department of Natural Resources

- Recommended parks and recreation plans should be updated every five years
- Align with the Statewide Comprehensive Outdoor Recreation Plan (SCORP) for funding opportunities

Ohio SCORP's Goals 2023-2028

1. Equity & Access – Ensure underserved populations have access to recreation
2. Trails & Connectivity – Expand regional trail networks and local links
3. Health & Wellness – Support physical and mental well-being through parks
4. Sustainable Investment – Prioritize low-maintenance, environmentally sound development
5. Local Partnerships – Collaborate with agencies and organizations for broader impact



What does a Parks and Recreation Master Plan Do?

- Creating a sense of direction for the parks department
- Creating and/or approving new park programs
- Allocating funding for park maintenance
- Planning for development or redevelopment
- Providing a guide for future park improvements, land purchases, and new parks
- Budgeting for park facilities and staff development
- Applying for external funding sources to expand physical parks and recreational program offerings

Planning Process

Needs Identification

- Who are the users? → What are their wants and needs?
- What are the facilities? → Do they meet all requirements?
- ADA Survey
- Historical and cultural assets

Public Involvement

- Web Survey
- Public Open House
- Public Engagement Events (Strawberry Fest)

Other Public Involvement

- Advisory Committee Meetings
- Stakeholder Interviews

Project Timeline

Project anticipated to take six months

Months 1 and 2 – Information Gathering and Analysis

Month 3 – Public Participation and Outreach

Month 4 – Needs Assessment

Month 5 – Priorities and Action Schedule

Month 6 – Final Plan Preparation

Your Role

Your duties as the advisory committee include:

- Representing the interests of your community
- Attending all advisory committee meetings
- Acting as a sounding board/reality check
- Be a proponent within the community for the new master plan
- Treat others with respect
- Communicate – let us know if there are issues

Advisory Committee Meetings

Looking at 4 total Meetings between now and October

Advisory Committee Meetings

Looking at 4 total Meetings between now and October

Fast Facts



AMERICAN
STRUCTUREPOINT
INC.

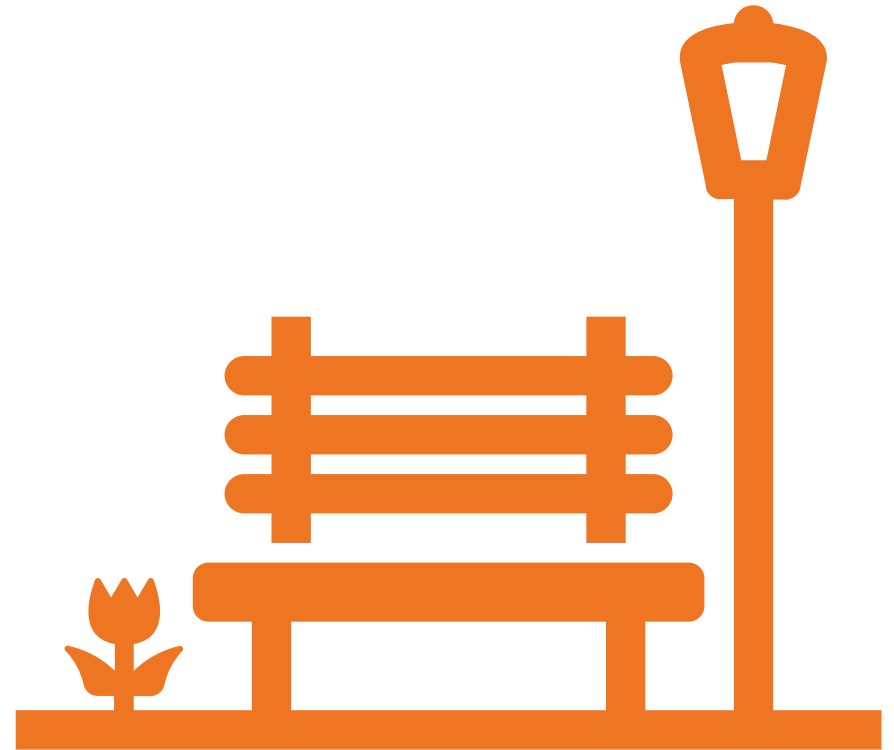
TROY

Does Troy have a higher or lower proportion of parkland compared to other similar-sized communities?

Much higher!

The national median is 10.7 acres per 1,000 residents.

Counting private parks and recreation areas, Troy has 34.2 acres per 1,000 residents.



Has Troy's median age been trending lower or higher since 2010?

2010



38.0

2024



39.6

When was Troy Aquatic Park built?

2005!



True or False: Between Fall 2021 and Fall 2024, an average of 100 soccer games were played on Troy fields per season.

True!

110.6 average soccer games are played per season



How many parks have playgrounds?

13!

50% of city-owned parks

17 jungle gyms



How many parks are in Troy?

27



In-House Monthly Survey

2022 to 2025

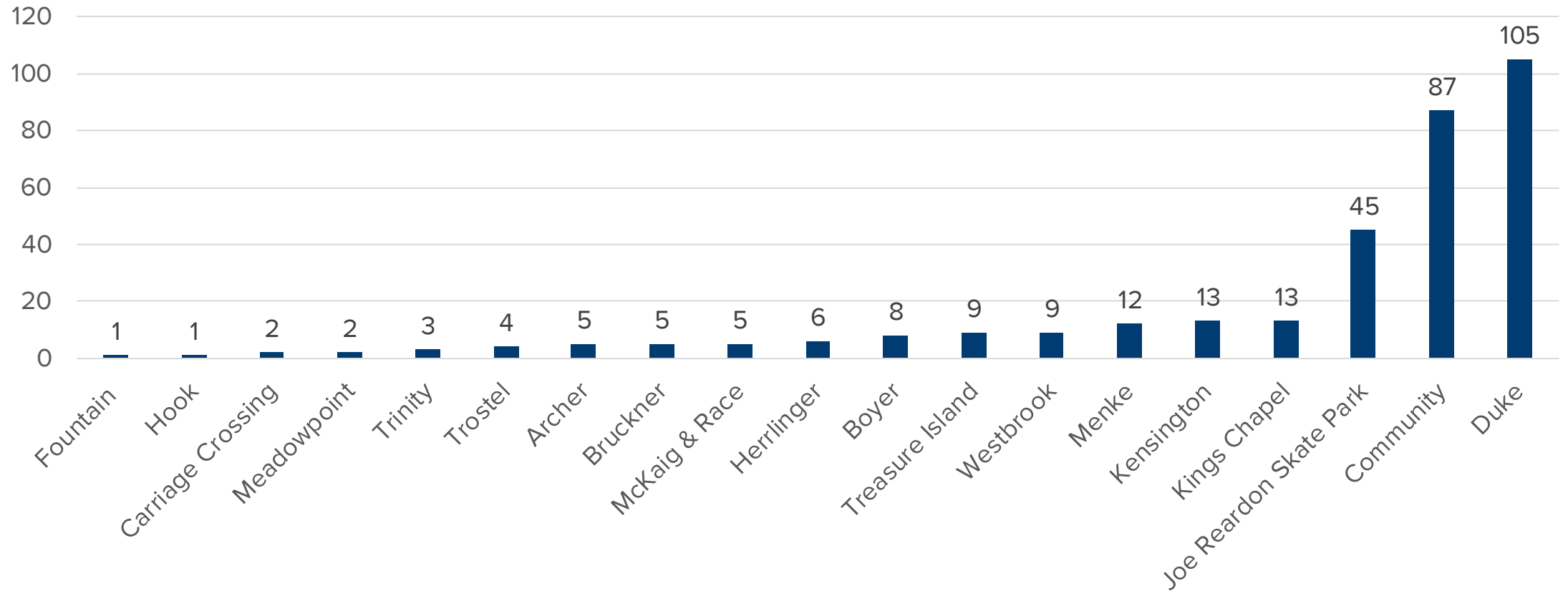


AMERICAN
STRUCTUREPOINT
INC.

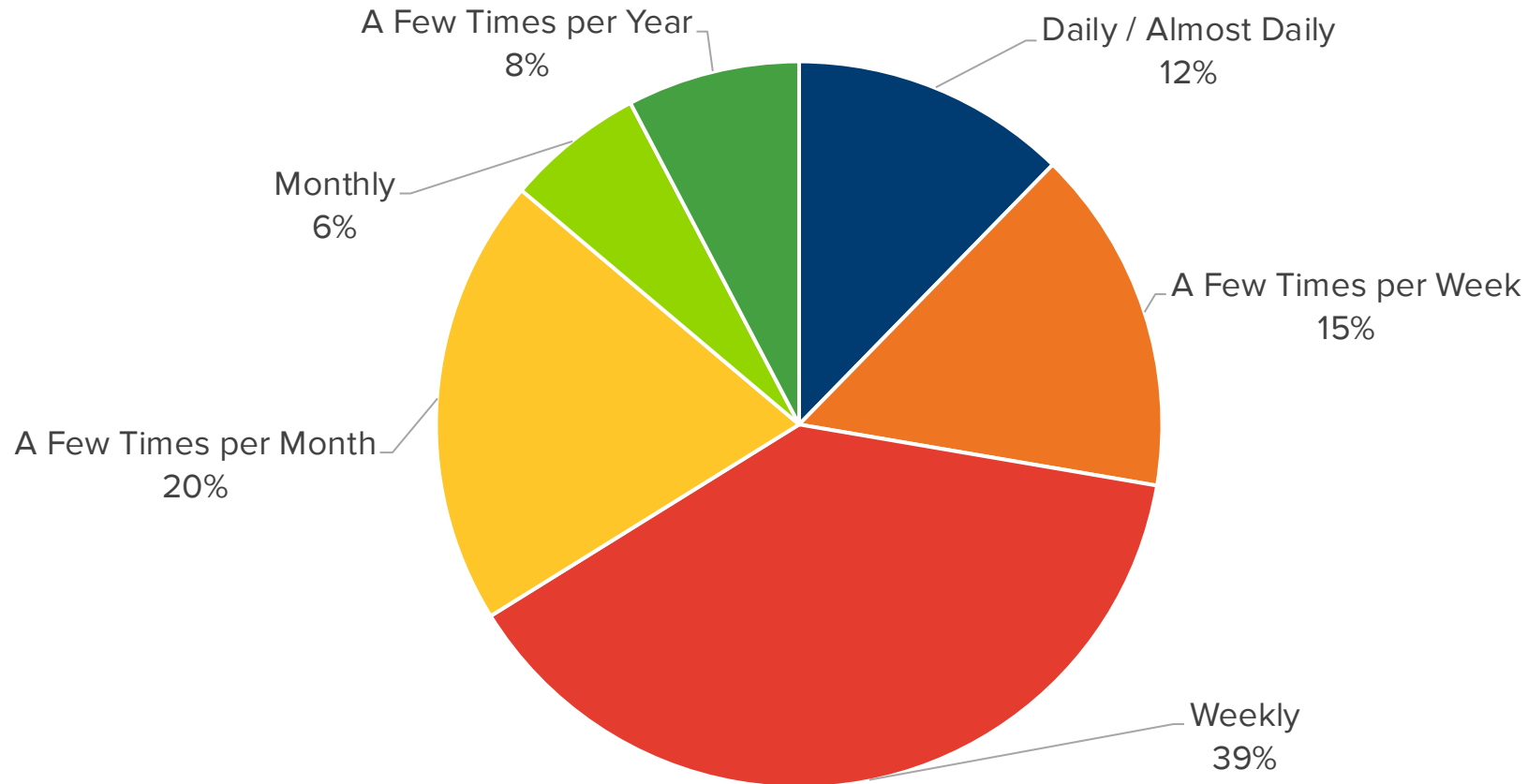
TROY

Survey Results (2022 to 2025)

Most Visited Park



How Often Do You Visit This Park?



Comprehensive Plan



PARKS AND RECREATION

The parks and recreation system in Troy is robust and offers a great deal of amenities. During the comprehensive planning process, residents and stakeholders expressed their appreciation for all the regional and local amenities provided by the City. Business owners and visitors also acknowledged how much these assets contribute to the desirability of Troy as a destination for recreation, entertainment, and businesses looking to locate in a new town.

Troy has a varied mix of park and recreation facilities ranging from smaller neighborhood parks with play equipment to medium-sized community parks with greenspace and naturalized areas to extensive multi-field sports facilities. During this planning effort, it became clear that Troy residents value their parks and how they help keep their community together. More importantly, residents want to maintain and update Troy's parks.

WHAT WE LEARNED

- **Park Space:** Troy has 37 park facilities for 23.9 acres per 1,000 residents, more than double the national average for similar-sized communities.
- **Trails:** The community has access to 18.62 miles of trails. Most similar-sized municipalities average 8.2 miles of trails.
- **Location:** Many parks are located east of I-75, and neighborhoods in this part of the City are well-covered by park service areas. However, newer subdivisions west of I-75 do not have the same level of service.
- **Amenities:** According to the Troy Park Department Assessment of Parks from 2019, similar amenities are abundant in the system. In particular, baseball/softball fields, basketball courts, football fields, golf courses, and similar sports-based facilities are plentiful. New amenities, such as meditation spaces, community gardens, etc., were not as prevalent.



AMERICAN
STRUCTUREPOINT
INC.

TROY

What We Heard During the Comp Plan

- **Park Acreage is Sufficient:** Residents feel Troy has enough parkland.
- **Popular Destinations:** Community parks and neighborhood parks are frequently visited and well-used.
- **Economic Driver:** Parks are valued as resident amenities and tourism attractions (e.g., floating tents), contributing to small business and economic development.
- **Activity Generators:** Duke Park, Hobart Arena, Treasure Island, and Community Park are central hubs for recreation and events.
- **Geographic Gap:** All major parks are east of the river; residents expressed interest in a large park on the west side.
- **Top Budget Priority:** 32% of participants selected park updates/improvements as the highest funding priority at in-person events.
- **Trail Connectivity:** Strong desire for more trails linking neighborhoods to parks.
- **Regional Strengths:** Access to the Great Miami River Trail and river recreation is a major asset.
- **Amenity Variety Over Acreage:** Residents prefer more diverse features and experiences over expanding total parkland.

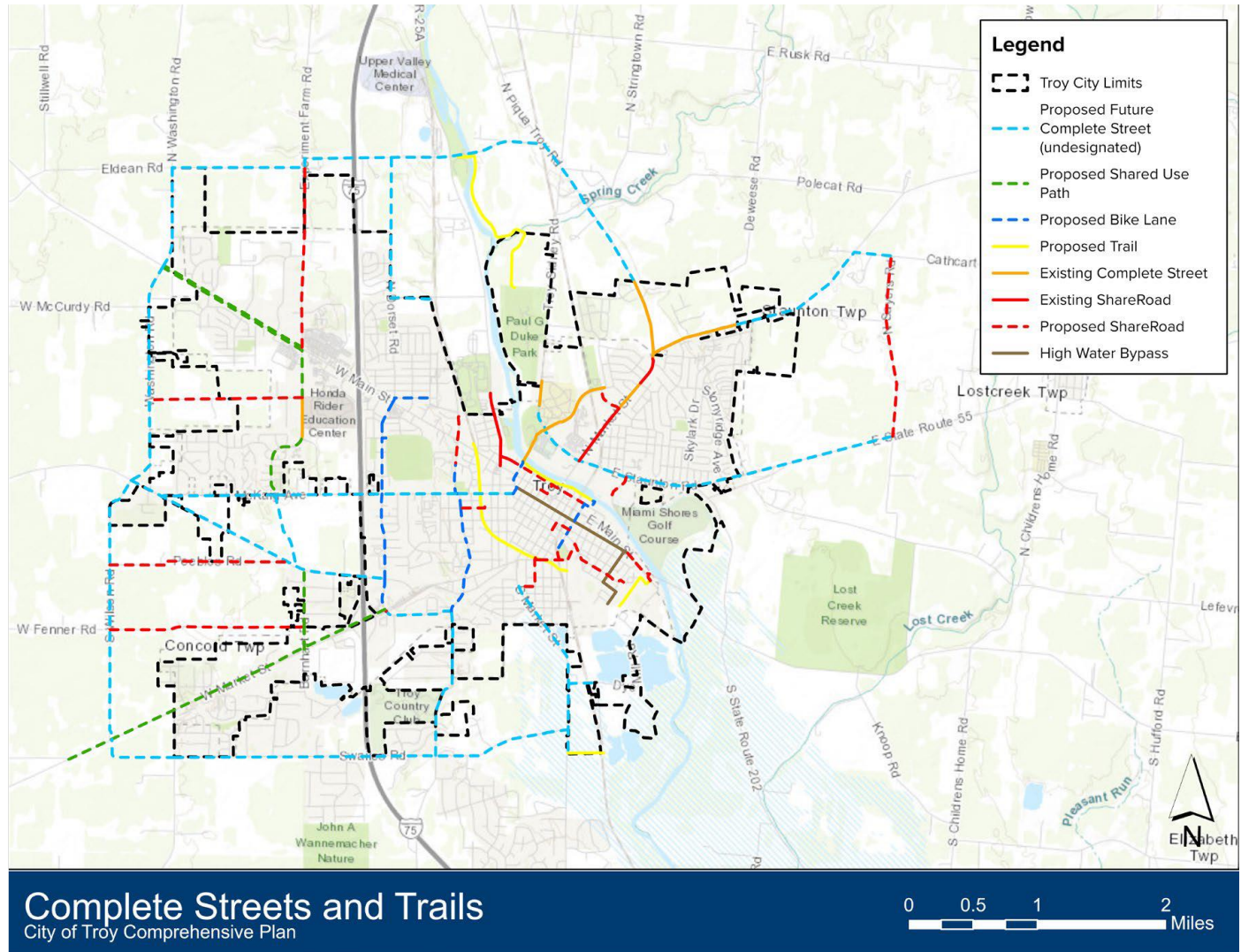


Comp Plan Strategies

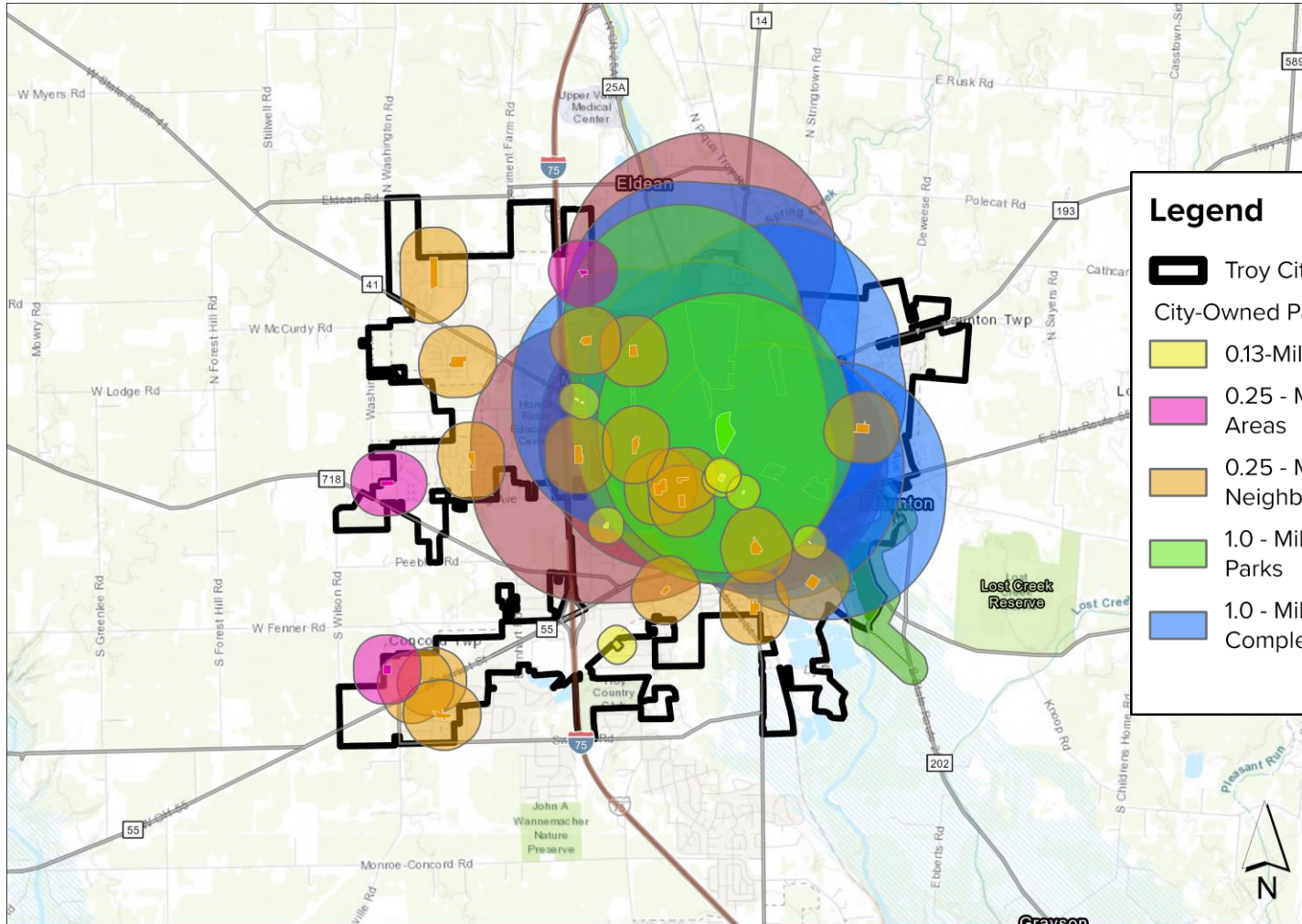
Parks & Recreation Strategies

- **Update parkland policy:** Revise ordinances to clarify when developers must provide park space versus paying a fee-in-lieu.
- **Modernize park assessment:** Convert the 2019 assessment into a 5-year parks and recreation master plan aligned with Ohio SCORP to improve grant eligibility.
- **Trail and street integration:** Link future trail projects to complete street priorities in the infrastructure plan.
- **Activate the riverfront:** Identify and prioritize river-related projects, especially following expected dam removal.
- **Invest in desired amenities:** Focus capital improvement funding on high-demand features (e.g., splash pad).
- **Design for low maintenance:** Add features that require less upkeep and support passive recreation, such as meditation gardens and walking paths.

Comp Plan Strategies



Existing Level of Service



Legend

- Troy City Limits
- City-Owned Parks**
- 0.13-Mile - Mini Parks
- 0.25 - Mile - Recreational Areas
- 0.25 - Mile - Neighborhood Parks
- 1.0 - Mile - Community Parks
- 1.0 - Mile - Sports Complexes
- 1.0 - Mile - Special Use Parks
- Other Parks**
- 0.13 - Mile - Greenways
- 0.13 - Mile - Mini Parks
- 0.25 - Mile - Neighborhood Parks
- 0.25 - Mile - Recreational Areas
- County Parks**
- 1.0 - Mile - Special Use Parks

City-Owned/Non-Owned Parks LOS
City of Troy Comprehensive Plan



Work To Date



AMERICAN
STRUCTUREPOINT
INC.

TROY

ADA Analysis



Short-Term Improvements (Low-Cost, High-Impact):

- Add clear signage, Braille QR codes, and accessible maps.
- Improve path maintenance, portable ramps, and pavement connections.
- Ensure accessible parking, water fountains, porta-potties, and picnic tables.
- Train staff on disability awareness and inclusive communication.

Medium-Term Improvements (Moderate Cost):

- Install continuous accessible pathways and perimeter loops.

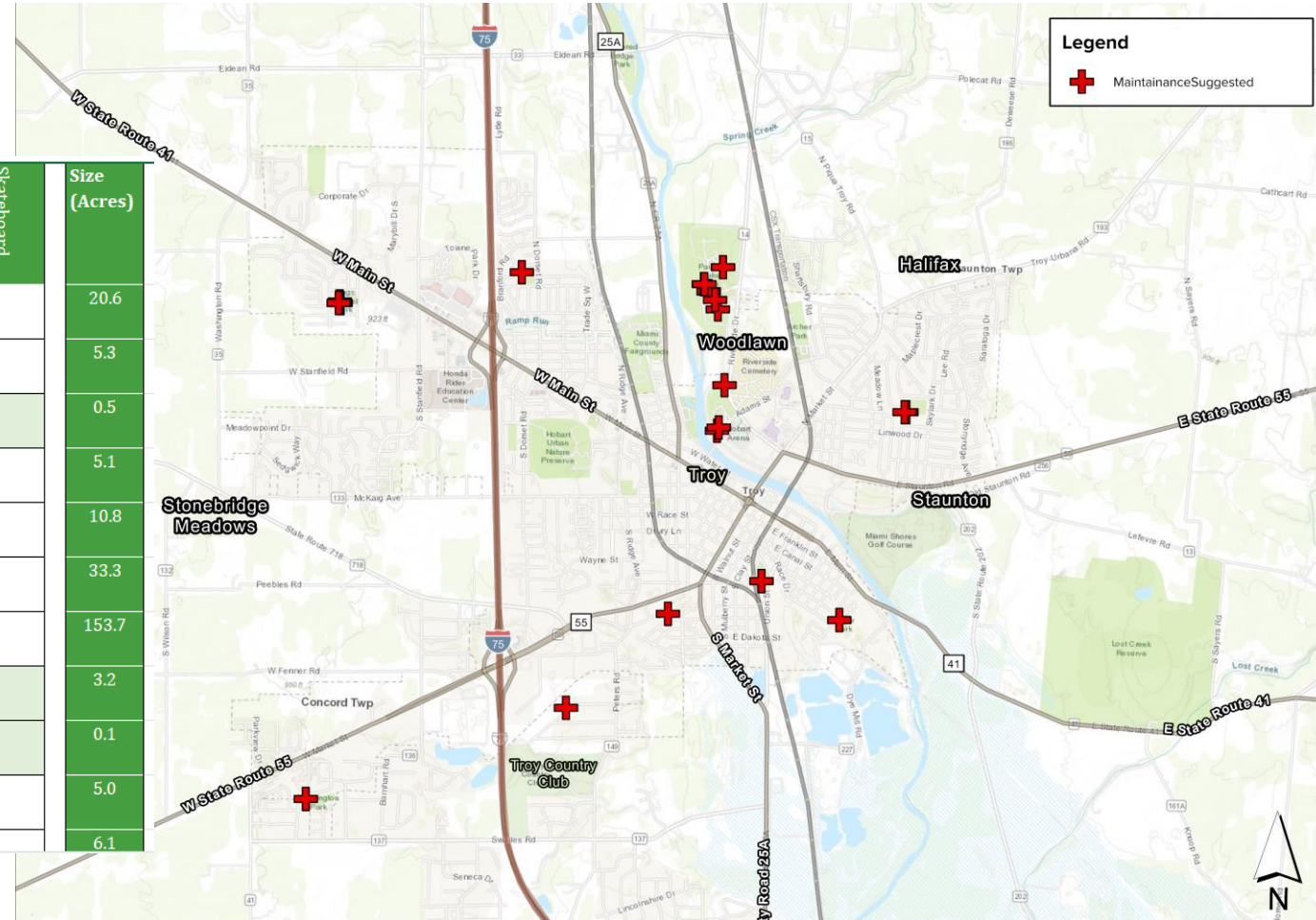
- Add e-bike charging, ADA restroom retrofits, and inclusive play areas.
- Add benches with armrests and lighting in low-visibility areas.

Long-Term Investments (High Cost):

- Build fully accessible trails and upgrade bridges where needed.
- Improve visitor centers, integrate smart tech, and explore adaptive recreation.
- Plan for future accessible transit stops and park shuttle access.

Staff Work

Park	Baseball	Basketball	Disc Golf	Football	Pickleball	Soccer	Tennis	Volleyball	Biking	Walking Path	Picnic Shelter	Playground	Parking	Restrooms	Skateboard	Size (Acres)
Archer Park 110 Foss Way	2	1				4					1	yes	yes	yes		20.6
Boyer Park 1200 Floral Ave	1	1									yes	yes				5.3
Bruckner Park 400 W. Water St	Green Space and Gazebo															0.5
Campbell Park 785 Maplecrest Dr	2															5.1
Carriage Crossing Park 212 Carriage Crossing	1										1	yes	yes			10.8
Community Park 200 Adams Street	1	2	9				9	1	yes		17	yes	yes	yes		33.3
Duke Park 1670 Troy-Sidney Rd	5	1		1	12	7			yes	yes	12	yes	yes	yes		153.7
Edgewater Park 2881 Wooden Ln	Passive Green Space															3.2
Fountain Park East Franklin / East Main	Green Space and Garden															0.1
Herrlinger Park 302 Union		1									2	yes	yes			5.0
Hevwood Park	2															6.1



Park Maintenance Map
City of Troy Comprehensive Plan

Activity



AMERICAN
STRUCTUREPOINT
INC.

TROY

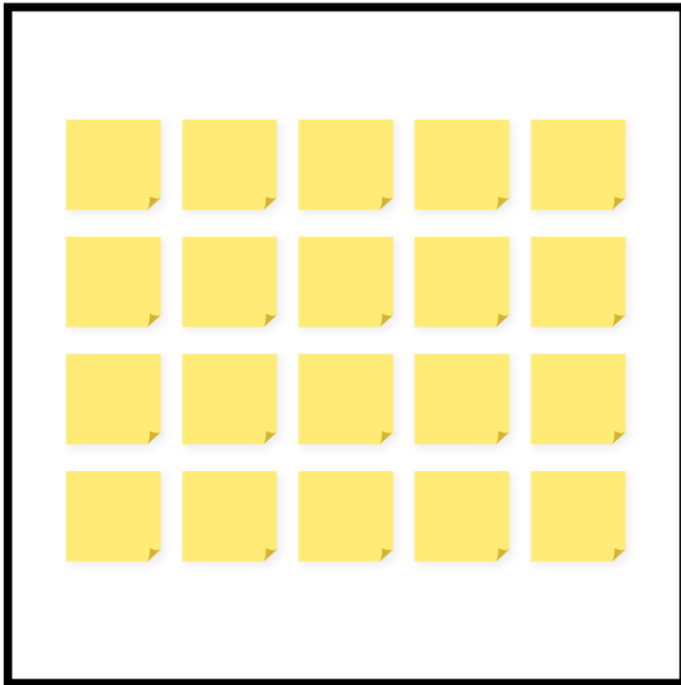
Goals and Objectives

The **Vision** is a general statement for the city parks as a whole that will guide future policy decisions, goals, and actions. The Mission/Vision defines the core purpose of the plan and outlines the desired future.

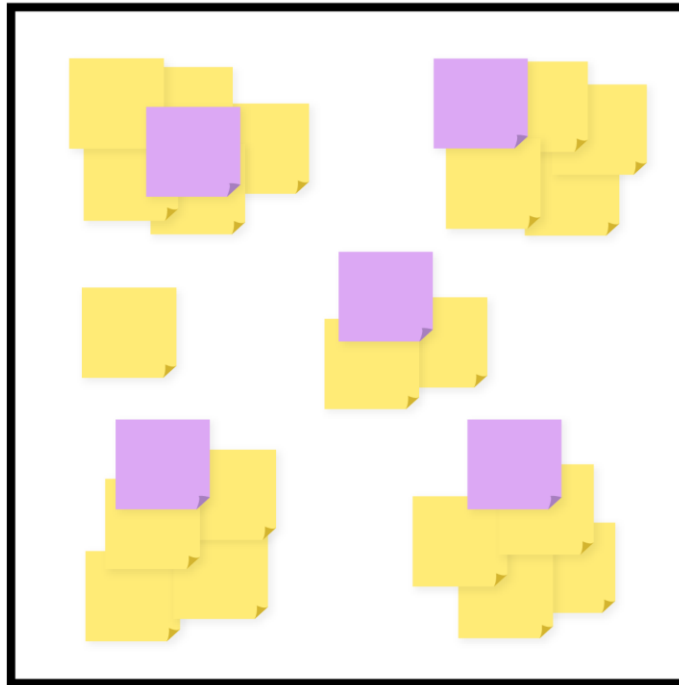
Goals are the targeted statements identified in the plan to produce measurable outcomes for parks and recreation.

Goals and Objectives Exercise

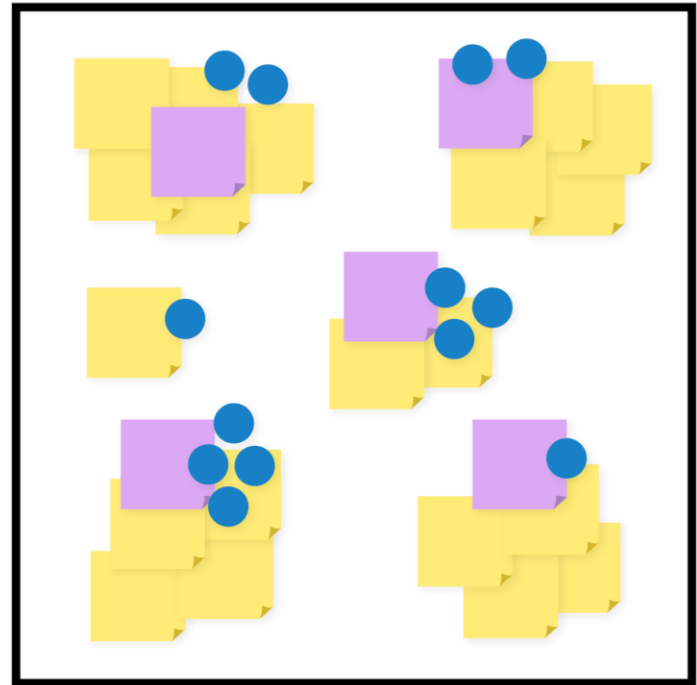
Step 1



Step 2



Step 3



Next Steps

- Finish Data Gathering
- Public Participation (Round 1)
 - Strawberry Fest
 - Online Survey
- Create Summary and Needs Assessment Sections of the plan



Troy Parks and Recreation Masterplan

The following is a public survey for the Troy Parks and Recreation Master Plan. This plan serves as a guide that reviews the City's current parks and recreation facilities, identifies the community's recreation needs, and predicts future demand.

Please answer the following questions to let us know how you see the City's current parks and recreation system currently and what the City should be pursuing in the future.

Data collected from this survey will be anonymous. Names or other personal information will not be attached to any responses. Responses collected will be summarized for use in the planning process only.

Thank you for your time and willingness to participate in our survey; please note that we are asking questions specifically about parks administered by the City of Troy Parks and Recreation Department.

1. From the following list, which are the closest parks to your residence? Please check up to three parks.

- Archer Park
- Boyer Park
- Campbell Park
- Carriage Crossing Park



Discussion

Any final questions or comments?



AMERICAN
STRUCTUREPOINT
INC.

TROY

Thank You!

Please don't hesitate to reach out with any questions!

Matthew O'Rourke, Group Leader
morourke@structurepoint.com

Ashley Newnam, Senior Planner
anewnam@structurepoint.com



AMERICAN
STRUCTUREPOINT
INC.

TROY

Help us learn more about Warrick County Parks

LEGEND

- 1 Scales Lake Park – Boonville, IN
- 2 Friedman Park – Newburgh, IN
- 3 Vann Road Park – Newburgh, IN
- 4 Warrick Sports Complex – Boonville, IN
- 5 Warrick Trails – Boonville, IN